



1. Materials: see 3015 note 1.

2. STAMPING : All glands to be stamped on the circular band in the following manner:

Stamping Detail

HAWKE PR111 SIZE / THREAD / -60°+80°C IP66 OL7 ONA UK 

e.g. HAWKE PR111 C / M32 / -60°+80°C IP66 OL7 ONA UK 

3. FINISH : This component may be coated or plated to suit the application.

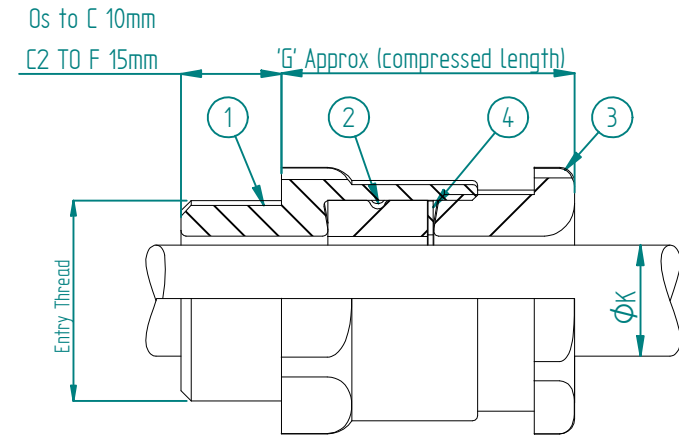
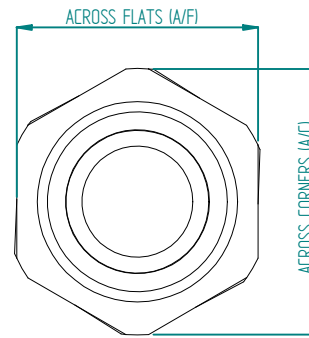
4. OPERATING TEMPERATURE : The standard operating temperature range for this gland is -60°C to + 100°C.

5. SPECIFICATION : In accordance with the relevant requirements of (EN 50262)

6. CABLE : This gland is suitable for non-armoured Elastomer or Plastic insulated cables.

7. VARIATIONS : Alternative gland body can have larger external dimensions with respect to the male coupling thread that are equal or larger to those shown in the table.

NO.	PART NO.	PART DESCRIPTION	QTY
1	3267 Os TO C 3080 C2 TO F	ENTRY	1
2	3062	RUBBER SEAL	1
3	3077	BACKNUT	1
4	3027	SKID WASHER (Optional)	1



SIZE REF	ENTRY THREAD SIZE		CABLE ACCEPTANCE DETAILS			HEX DIMENSIONS	
	METRIC	IMPERIAL	DIAMETER OF CABLE (K)		G'	ACROSS FLATS	ACROSS CORNERS
			STANDARD SEAL				
			MIN	MAX	mm		
OS / 2K	M16	N/A	3	8	25.5	19 A/F	21.2 A/C
O	M16	N/A	7.5	10.9	25.5	19A/F	21.2 A/C
O	M20	N/A	7.5	11.9	23.5	24 A/F	26.5 A/C
A	M20	N/A	11	14.3	23.5	24 A/F	26.5 A/C
B	M25	N/A	13	20.2	28	32 A/F	36 A/C
C	M32	N/A	19.5	26.5	29.2	41 A/F	44 A/C
C2	M40	N/A	25	32.5	32	50 A/F	54 A/C
D	M50	N/A	31.5	44.4	38	60 A/F	66 A/C
E	M63	N/A	42.5	56.3	42	80 A/F	86 A/C
F	M75	N/A	54.5	68.2	42	95 A/F	102 A/C

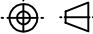
A3 THIS IS A CAD DRAWING AND MUST BE EDITED AT SOURCE

HAWKE
International
OXFORD ST WEST
ASHTON-U-LYNE
OL7 ONA
TEL: +44 (0)161 308 3611

ALL COPYRIGHT RESERVED - HAWKE INTERNATIONAL 2005.
THIS DRAWING AND ALL COPYRIGHT THEREIN IS THE PROPERTY
OF HAWKE INTERNATIONAL, A DIVISION OF HUBBELL LIMITED.
(A member of the Hubbell Group of Companies).

(COPYRIGHT CONDITION: THIS DRAWING SHALL BE USED ONLY FOR THE PURPOSE
FOR WHICH IT IS PROVIDED AND NO REPRODUCTION OR PUBLICATION OF THIS
DRAWING MAY BE MADE AND NO ARTICLE MAY BE MANUFACTURED OR
ASSEMBLED IN ACCORDANCE WITH THIS DRAWING WITHOUT THE PRIOR WRITTEN
CONSENT OF THE OWNER.

REMOVE ALL BURRS AND SHARP EDGES USING MINIMUM CHAMFER OR RADIUS
PARTICULARLY REMOVE ALL BURRS FROM START AND FINISH OF THREADS

3RD ANGLE PROJECTION 

DO NOT SCALE IF IN DOUBT ASK

GENERAL TOLERANCES

LINEAR ± 0.15mm
ANGULAR ± 0°30'

UNLESS OTHERWISE STATED

DRN	DM	TITLE
CHD	CJ	GA FOR PR 111 RANGE
DATE	18/11/08	DRG. No.
UNITS	mm	PR 111
FIRST ISSUE	27/1/09 AT A	SCALE NTS
MODIFICATION	DATE/SIG DCN ISSUE	SHEET 1 OF 1